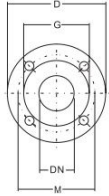
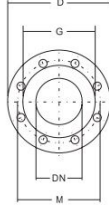


Flange Dimensions



PN16 FLANGES

DN	D	M	G	HOLES N°	∅	MAX. THICKNESS
32	140	100	78	4	18	18
40	150	110	88	4	18	18
50	165	125	102	4	18	20
65	185	145	122	4	18	20

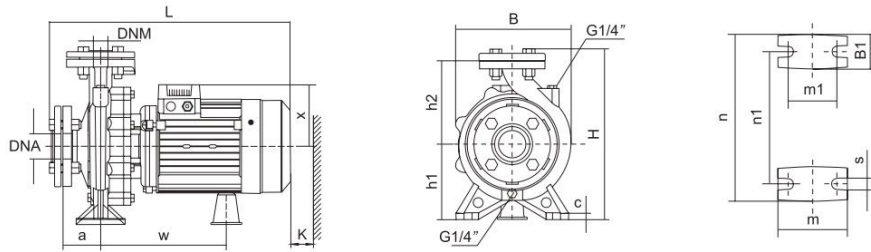


PN16 FLANGES

DN	D	M	G	HOLES N°	∅	MAX. THICKNESS
80	200	160	138	8	18	22
100	220	180	158	8	18	22

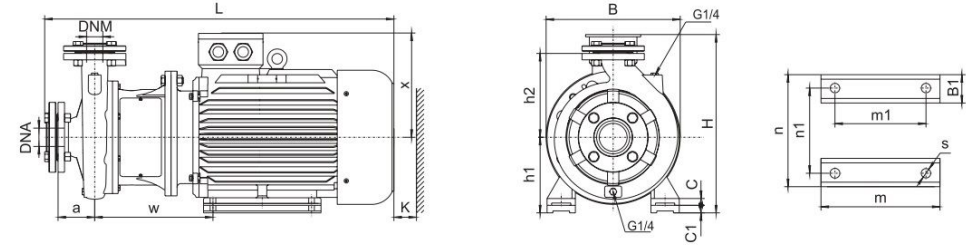
Installation Sketch

up to 7.5 kW included



Installation Sketch

From 7.5 kW



MODEL	DNM	DNA	a	w	x	h2	B1	c	h1	m	m1	n	n1	s	B	H	L	K
32-125/7	32	50	80	223	113	140	48	12	112	100	70	190	140	15	192	281	427	85
32-125/11																		
32-160/15																		
32-160/22																		
32-160/30																		
32-200/30																		
32-200/40																		
32-250/55																		
32-250/75																		
32-250/75																		
40-125/11	40	65	80	255	127	140	45	12	112	100	70	210	160	15	218	282	489	95
40-125/15																		
40-125/22																		
40-160/30																		
40-160/40																		
40-200/55																		
40-200/75																		
40-200/75																		
40-200/75																		
40-200/75																		
50-125/22	50	65	100	262	127	160	50	12	132	100	70	240	190	15	243	322	518	110
50-125/30																		
50-125/40																		
50-160/55																		
50-160/75																		
50-160/75																		
50-160/75																		
50-160/75																		
50-160/75																		
50-160/75																		
65-125/40	65	80	100	265	180	180	68	14	160	125	95	280	212	15	283	372	564	594
65-125/55																		
65-125/75																		
65-125/75																		
65-125/75																		

MODEL	DNM	DNA	a	w	x	h2	B1	C	C1	h1	m	m1	n	n1	s	B	H	L	K
40-250/92	40	65	100	310	260	225	65	20	20	180	260	210	320	254	14.5	350	440	845	110
40-250/110																			
40-250/150																			
50-200/92	50	65	100	310	260	200	65	20	-	160	260	210	320	254	14.5	350	420	845	120
50-200/110																			
50-250/150																			
50-250/185																			
50-250/220																			
65-160/92																			
65-160/110																			
65-160/150																			
65-200/150																			
65-200/185																			
65-200/220	65	80	100	323	275	225	70	25	-	180	304	254	355	279	14.5	440	895	925	110
65-160/92																			
65-160/110																			
65-160/150																			
65-200/150																			
65-200/185																			
65-200/220																			
65-200/220																			
65-200K/185																			
65-200K/220																			
65-200K/300																			
65-250/220	80	100	125	352	275	250	70	25	-	200	369	305	395	318	18.5	400	505	1026	120
65-250/300																			
65-250/370																			
80-160/110																			
80-160/150																			
80-160/185																			
80-200/220																			
80-200/300																			
80-250/370																			
80-250/450																			
80-250/550																			

Hydraulic Performance Curves

XST40-160	~2900rpm	ISO 9906 Annex A
------------------	-----------------	-------------------------

